



Shree Infra

Civil and MEP under one Roof

COMPANY PROFILE



+91 9372681431



sales.shreeinfragroup@gmail.com



TABLE OF **CONTENT**

- Our Goals
- Our Mission
- Our Vision
- About Company
- Why Us
- Our Milestones
- Core Values
- Our Services
- Our Clients
- Our Reach
- Contact Us



OUR GOALS

United by a shared vision of innovation, excellence, and transformation, our merged entity sets forth on a dynamic path, drawing from the legacies of three distinct companies. Our collective goals encapsulate the essence of our diverse expertise, unwavering commitment to quality, and a drive to reshape industries and enrich lives.

PIONEERING MEP EXCELLENCE

SAFEGUARDING LIVES AND PROPERTY

CRAFTING SUSTAINABLE LIVING SPACES

DELIVERING HOLISTIC SOLUTIONS

ENGINEERING EXCELLENCE AND INNOVATION

CREATING SUSTAINABLE COMMUNITIES

A VISION BEYOND NAMES

A UNIFIED LEGACY OF EXCELLENCE

ANTICIPATING TRANSFORMATIVE VENTURES

OUR MISSION

At the intersection of innovation, expertise, and commitment, our merged entity embarks on a unified mission—a mission that draws inspiration from the diverse strengths. Our mission statement encapsulates our shared purpose and the transformative impact we aim to create:

ENGINEERING EXCELLENCE AND BEYOND

CREATING SUSTAINABLE ENVIRONMENTS

SAFETY, INTEGRITY, AND CUSTOMER-CENTRICITY

EMPOWERING GROWTH AND COLLABORATION

ENHANCING QUALITY OF LIFE

GLOBAL IMPACT, LOCAL ROOTS

ANTICIPATING TOMORROW'S OPPORTUNITIES

A UNIFIED LEGACY OF EXCELLENCE

STAY TUNED FOR OUR COLLECTIVE JOURNE

OUR VISION

A new vision emerges—a vision that encapsulates the expertise, innovation, and commitment. Our collective vision encompasses a harmonious blend of MEP consulting and contracting services, real estate development, and the art of creating vibrant living spaces. As we embark on this transformative journey, our vision guides us towards new horizons:

EXCELLENCE IN ENGINEERING AND DESIGN

SAFETY, INTEGRITY, AND INNOVATION

TRANSFORMING LANDSCAPES, ENRICHING LIVES

SUSTAINABLE AND INCLUSIVE COMMUNITIES

GLOBAL IMPACT, LOCAL EXCELLENCE

A JOURNEY OF COLLABORATION AND TRANSFORMATION

OUR VISION



- Excellence Engineering Design
- Safety, Integrity, and Innovation
- Transforming Landscapes, Enriching Lives
- Sustainable in and Inclusive Communities
- Global Impact, Local Excellence
- A Journey of Collaboration and Transformation
- Stay Tuned for the Future Unveiled

A new vision emerges—a vision that encapsulates the expertise, innovation, and commitment. Our collective vision encompasses a harmonious blend of MEP consulting and contracting services, real estate development, and the art of creating vibrant living spaces. As we embark on this transformative journey, our vision guides us towards new horizons:

ABOUT COMPANY

With over 16 years of dedicated service in the Civil, Piping, Fire protection system, Plumbing, Electrical and Structural Fabrication industry, Mr. Tushar Shendarkar stands as a seasoned professional renowned for his expertise in project execution. Throughout his career, he has passionately spearheaded the successful completion of over 100 projects across Pan India, earning him widespread recognition and trust among clients and peers alike.

Mr. Shendarkar's commitment to excellence and meticulous attention to detail have been the cornerstones of his success in the industry. His specialized focus on the execution phase of projects has consistently delivered results that exceed expectations, ensuring the seamless realization of clients' visions into tangible structures.

Having navigated through diverse challenges and complexities inherent in the construction landscape, Mr. Shendarkar has honed his skills to deliver projects with precision, timeliness, and utmost quality. His unwavering dedication to client satisfaction has earned him a reputation for reliability and integrity, making him the go-to expert for projects of any scale or complexity.

With a profound understanding of the intricacies involved in Civil, Piping, Fire, and Structural Fabrication projects, Mr. Shendarkar brings a unique blend of experience, innovation, and leadership to every endeavor. His collaborative approach, coupled with a relentless pursuit of excellence, ensures that each project is executed with utmost professionalism and efficiency.



Mr. Tushar Shendarkar

PROPRIETOR

As Mr. Tushar Shendarkar continues to uphold his legacy of excellence, he remains steadfast in his commitment to delivering unparalleled results and exceeding expectations in every project he undertakes. With a proven track record of success and a passion for innovation, he stands as a trusted partner for clients seeking unparalleled expertise in project execution.

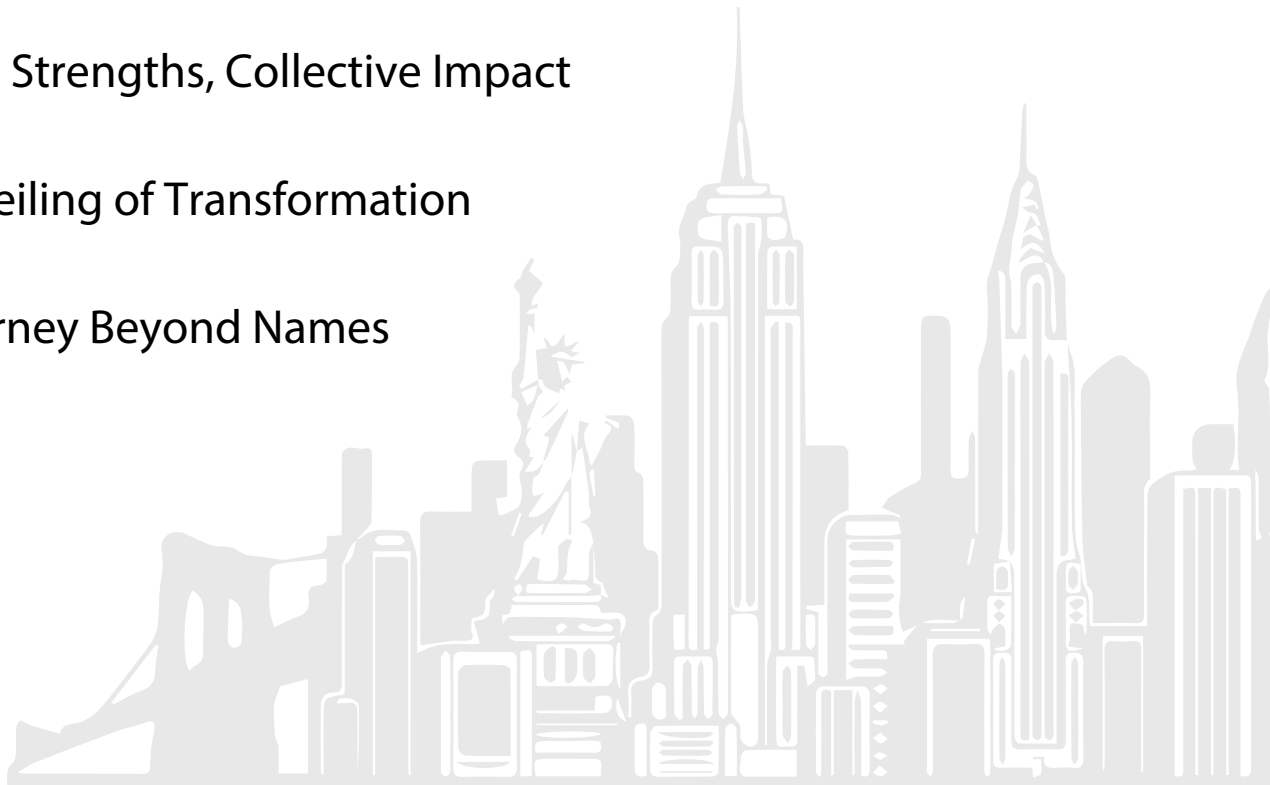
WHY US

1. Diverse Expertise, Unified Vision
2. Seasoned Leadership
3. Global Collaboration
4. Safety-Centric Approach:
5. Engineering Excellence
6. Ethical Practices and Transparency
7. Innovation and Sustainability
8. Comprehensive Real Estate Development
9. Customer-Centric Approach
10. Transformative Collaboration



OUR MILESTONES

1. Ric h Heritage and Evolution
- 2.Global MEP Excellence
3. Global Collaboration
4. Safety and Engineering Excellence
- 5.Quality Plumbing Services
6. Visionary Real Estate Projects
- 7.C reating Haven Amidst Nature
8. Unified Strengths, Collective Impact
- 9.An Unveiling of Transformation
- 10 .A Journey Beyond Names



CORE VALUES



SAFETY

The safety of our employees and the traveling public is everyone's responsibility.



INTEGRITY

Our business conduct will include the highest level of honesty, ethics, and moral correctness.



RESPECT

Respect is the basic rule of behaviour that guides every employee in all of his or her actions



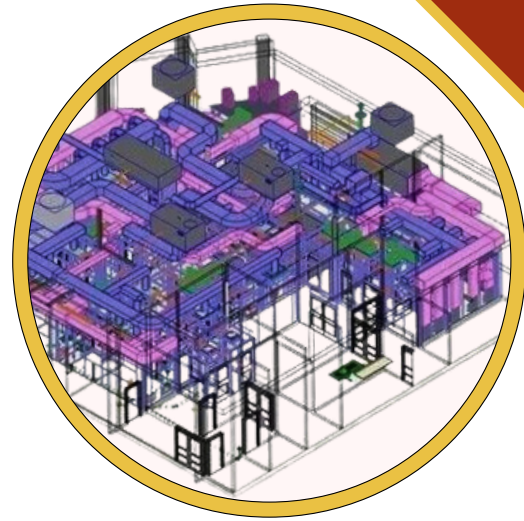
TEAMWORK

Our culture of teamwork allows us to work together within the Company, and with our customers to deliver better solutions

OUR SERVICES

CIVIL MEP CONTRACTING & CONSULTING

- Expertise in Plumbing, Electrical, HVAC, Fire Protection, STP systems
- Skilled engineers for precise designs, project management, and construction
- Adherence to global standards for top-notch efficiency and quality



Industrial Solutions



- EDiverse industrial expertise:
- Structural Steel Fabrication & Erection
- Various Piping Jobs
- Stainless Steel and Carbon Steel Piping for Process and Utilities
- Equipment Erection and Installation (Static and Rotary)
- Site Fabrication of Storage Tanks, Vessels, Silos, Chimneys, Hoppers, and more
- Specialization in Plant Maintenance, Modification & Modernization for operational excellence.

REAL ESTATE DEVELOPMENT

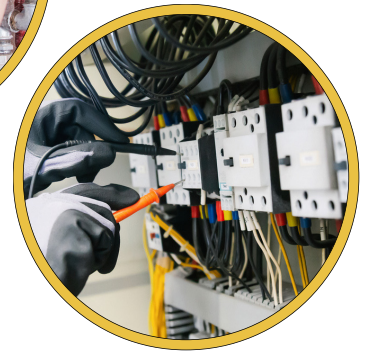
- Expertise in land acquisition, development, and plot sales
- Innovative projects: apartments, bungalows, and more
- Visionary planning for consumer satisfaction



OUR SERVICES

CIVIL, PLUMBING AND ELECTRICAL SERVICES

- Expertise in plumbing and electrical services
- Strong commitment to quality and integrity
- Dedicated to customer satisfaction
- Proficiency in residential, commercial, and industrial projects
- Consistently exceeding expectations with superior solutions



Fire Protection Systems

- Philosophy emphasizes active and passive fire protection systems
- Priority on safeguarding lives and property
- Dedication to safety through innovative solutions
- Adherence to the highest standards of excellence



CONSTRUCTION AND PROJECT MANAGEMENT

- Meticulous, strategic approach
- Construction and project management
- End-to-end oversight for seamless execution
- Meeting client expectations while ensuring safety standards



OUR SERVICES

LAND DEVELOPMENT

- Diverse Real Estate Legacy
- Meticulous Planning and Execution
- Visionary Leadership Innovation
- Unwavering Commitment to Excellence



Integrated Building Management Systems



- Specializing in Integrated Building Management Systems
- Enhancing efficiency, safety, and convenience
- Integrating systems for intelligent, responsive environments

STRUCTURAL FABRICATION AND ERECTION

- Expertise in fabricating and erecting steel structures
- Meeting the highest industry standards
- Precision and quality in industrial and commercial projects



OUR SERVICES

MAINTENANCE, MODIFICATION & MODERNIZATION

- **Plant Maintenance Excellence**
- **Efficiency & Adaptability**
- **Strategic Modernization Approach**
- **Sustainable Plant Enhancements**



Welcome to a new era of collaboration, where our combined strengths create a force that redefines industries, shapes environments, and sets new benchmarks for excellence. Stay tuned as we unveil transformative collaborations and projects that reflect our unwavering commitment to quality, innovation, and impact.



Our Clients

HOTELS AND RESTARUNTS

01



● **3 Star Hotel at Lonavala, S.S. Developers**

● **Business Hotel at Lonavala, Obecons**

● **Aanando Resorts, Saputara Nashik**

● **MUMBAI SE, Mumbai Domestic Airport**

● **Hotel Novatel at Lavasa Pune (4Star)**

● **Four Season Hotel At Amby Vally**

● **Timber Chalet Hotels & Bungalow, Amby Vally, Lonavala**

● **Namak Restaurant, Amby Wally**

● **Mabrook Hotel, Amby Wally**

● **Four Season, Amby Vally**

● **Matesh Wariat, AmbyVally**

● **The Home Store, Pune**

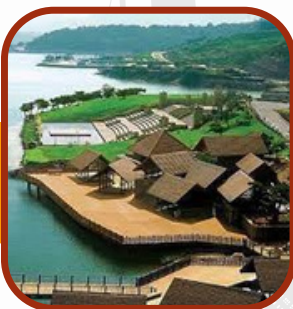
● **Water Kingdom - Essel Group**

● **County Resort - Tarkarli**

02



03



04



Our Clients

RESIDENTIAL

01



● **United Galaxy, Pen**

● **Indraprastha, Alibaug**

● **Akshar Group (GREEN WORLD & Elementa)**

● **Sahara City-Raipur (124 Acre Township)**

● **Satyanagar, Boisar (Township of 56 Acres)**

02



● **Cabana Properties - Soham Group, Lonavala**

● **Poddar Housing**

● **Puranik Builders**

03



● **Reserve Bank Of India Colony, Gujrat-Ahemadabad**

● **Panasia, Cabana Properties, Juhu**

● **Matesh Wariat, AmbyVally**

● **Skyline Developers, Karjat**

04



● **Kohinoor Maxcity, Ambermath**

Our Clients

RESIDENTIAL

01



Tassa Bungalow Scheme, Lonavala

Panwelkar Builders

Kanwa Farms (Bungalows with resort) Asangaon

Elite by Elite Group, Pune

02



Pancharatna (Township) Geometrics Developers

Jet Reality, Malad

Poonam Baug, Ville parle

Daga Sapphire, Amaravati

03



Bliss, Eco Housing, Ambernath

Green Way, Eco Housing, Wada

Kohinoor Castle (Ambernath)

Marvel Developers (Taloja)

04



Kavyashree Prangan (Wangani)

Our Clients

INDUSTRIAL

01



● **Tata Electrical Substation, BKC**

● **MGN Properties, Ambarnath**

● **Runa Chemicals, Dombivli**

● **L&T, Pawai**

02



● **Madhukar Co-Operative Sugar Mills, Jalgaon**

● **Amul Dairy Ltd. Gujrat**

● **Mothers Dairy, Pune**

03



● **Sandoz Shape Office, Kalwa**

● **Aditi Jewels, Andheri, SEEPZ**

● **Asteck Chems Pvt. Ltd.**

04



● **HM for ABRLat Aurangabad**

● **Rinder(I) Ltd., Bahadurgarh, Delhi**



Our Clients

IT OFFICES AND COMMERCIALS

01



● Supreme Plastic Ltd., Jalgaon

● CYBYE IT Office

● Symphony Services

● Reserve Bank of India, Mumbai & Gujarat

● Punjab National Bank

● Bank of New York, Pune

● Sun jewels Pvt. Ltd., Mumbai

● Sharekhan, Mumbai Office

02



03



04



Our Clients

HOSPITALS

01



Goa Hospital, Bombolim

Jupiter Hospital, Thane

Fortis Healthcare, Washi

Millennium Hospital, Seawood

02



03



04



Our Clients

WAREHOUSE PROJECTS

01



Reliance Superspeciality Stores

Star Mall Dadar, Mumbai

**International Convention Centre,
Solapur (6,00,000 Sqft)**

02



03



04



Our Clients

RETAILS AND MALLS

01



02



03



04



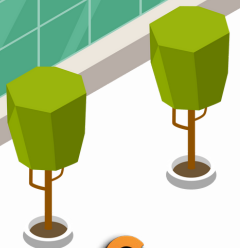
Astral India Pvt Ltd (Coimbatore)

Green House Nasik (Agricultural)

Alpha Warehousing Services (Pune)

Guru Warehousing Corporation (Chennai)

Naik Ice & Cold Storage (Mumbai)

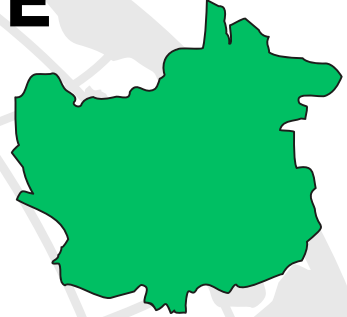


OUR REACH

MUMBAI



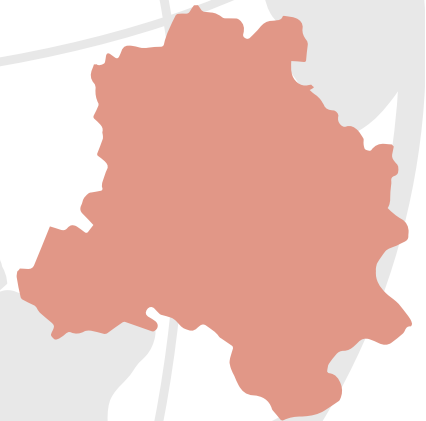
PUNE



GUJARAT



DELHI



MAHARASHTRA





THANK YOU

Contact
Mr. Tushar Shendarkar



Phone call
+91 9987039351



Email Address
sales.shreeinfragroup@gmail.com



Website
www.shreeinfragroup.com



Office Address
Office No 7 Shree swami samarth Krupa
Chs, Opposite Shree swami Samarth Math
P&T colony Nandivali road, Dombivli east.421201

